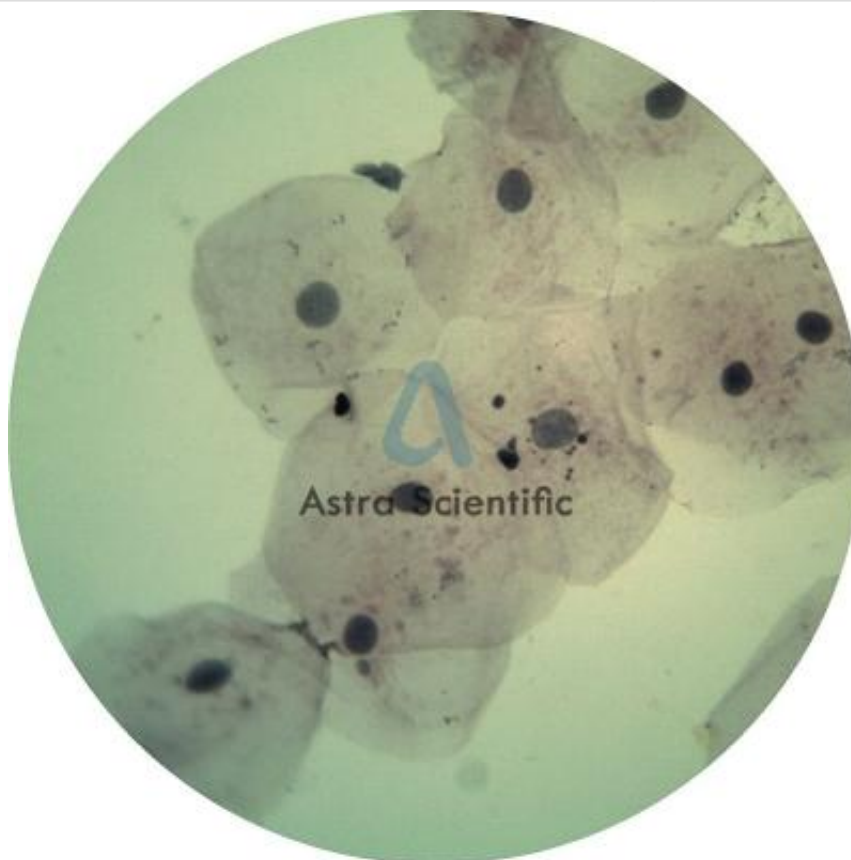


Product Name :
Mouth Smear (400x)

Product Code :
MICROSCOPESUK-AS11LAB004B



Description :

Mouth Smear (400x)

Technical Specification :

Human cheek cells divide about every 24 hours and are constantly shed from the body. Cheek cells are often used to extract DNA for testing.



Astra Scientific

www.astrascientific.com, **Email:** info@astrascientific.com

Address: K-88, 20th Street, Annanagar, Chennai, India – 600040 **Phone:** +91-8860605265